

EL-001 - EtherLINQ

4G/LTE Ethernet Router with WiFi, VPN & Firewall



Key Product Features

- Integrated 4G LTE Modem
- AT&T FirstNet and T-Mobile Band 71 Support
- 1 LAN + 1 WAN or 2 LAN Port Options
- WAN Fail-Over / Fall-Back
- WiFi b/g/n Access Point (300 Mbps)
- IPSec VPN Client & Server
- NAT Router Mode with NAT/PAT
- Bridge Mode (WAN IP Pass-Through)
- Virtual Cable Mode
- Integrated GPS
- USB Webcam & Serial Device Servers
- Metal Chassis & Wide Input Voltage Range



Applications

- Remote Video Surveillance
- Wired WAN Backup / Fail-Over
- Kiosks / Vending Machines / POS Terminals
- Temporary Locations & Hot Spots
- SCADA / Telemetry / PLC Remote Access
- IOT / M2M Deployments
- AVL and In-Vehicle Applications

Ordering Information

Part No.	Description
EL-001/EC25-AF	Proxicast EtherLINQ for AT&T, T-Mobile & Verizon. Includes WiFi, GPS & IPSec

All models include LTE modem, 4G and WiFi antennas, AC power supply, mounting hardware, 1 year warranty and free lifetime technical support.

Description

The EtherLINQ is Proxicast's fourth generation of enterprise-grade secure cellular gateways. This series features an embedded LTE cellular modem which seamlessly becomes a WAN interface for the EtherLINQ's router and is fully integrated with all of its security, performance, and management capabilities.

The router is loaded with security features including IPSec client & server VPN, firewall and access control, NAT, port forwarding, DHCP server, an integrated USB Webcam server, serial device server, GPS functionality (in some models) and many other powerful features required for complex and demanding applications. Proxicast's exclusive "Virtual Cable Mode" is also supported for true remote bridging between other EtherLINQs and PocketPORTs.

The EtherLINQ has a built-in IEEE 802.11 b/g/n WiFi access point allowing WiFi devices to securely communicate with the EtherLINQ and access the wired network or Internet via the WAN/LTE.

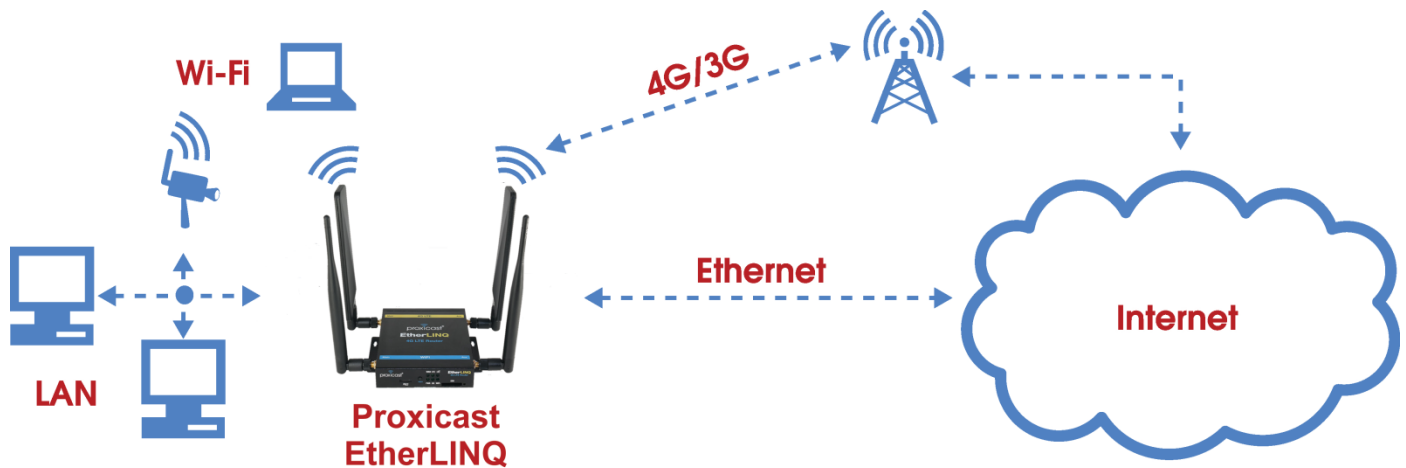
Its small size and all metal construction make it the perfect choice for applications where a high-performance, secure, reliable and rugged cellular router is required.

EL-001 - EtherLINQ

4G/LTE Ethernet Router with WiFi, VPN & Firewall



Typical Application



Front & Rear Panels



Front Panel



Rear Panel

EL-001 - EtherLINQ

4G/LTE Ethernet Router with WiFi, VPN & Firewall



Hardware Specifications

Physical	
Dimensions	4.7 x 5.3 x 1.0 in 120 x 135 x 25 mm (excluding antennas & mounting bracket) 7.1 x 6.6 x 1.0 in 180 x 168 x 25 mm (including antenna & mounting bracket)
Weight	12 oz (0.34 kg) (excluding antennas & mounting bracket) 18 oz (0.51 kg) (including antennas & mounting bracket)
Power Specification	9-28 DC input (12 VDC typical)
Power Consumption	< 3W Typical
Operating Temp.	-22 to 140 F (-30~60 C)
Operating Humidity	10%~90%
Chassis	18 ga. Steel. Desktop & Removable Mounting Brackets (included). Kensington Security Slot (lock)
Certifications	EMC: FCC ID: 2AL8JEL-001 FCC Part 15 Class B, CE-EMC Class B, C-Tick Class B, VCCI Class B Safety: CSA International, CE EN60950-1 (UL60950-1, CSA60950-1, EN60950-1, IEC60950-1) – RoHS Compliant

Connectors	
LAN 1	1 LAN auto-negotiating, auto MDI/MDI-X 10/100 Mbps RJ45 Ethernet port
WAN / LAN 2	One auto-negotiating, auto MDI/MDI-X 10/100 Mbps RJ-45 Ethernet port. Software definable as a second LAN port.
USB 2.0	For USB webcams, serial devices and firmware loading
Power	4-pin Molex Mini-Fit with retention clip
Reset Button	Restores factory default settings & activates Configuration Mode
MicroSD Slot	For internal temporary storage
SIM	Mini SIM (2FF) for LTE modem. SIM size adapters included.

Antennas Connectors	
4G/LTE	2x2 MIMO SMA Female antenna jacks. Two 5 dBi paddle style swivel antennas (SMA Male).
WiFi	2x2 MIMO Reverse Polarity SMA (RP-SMA) Female antenna jacks. Two 5 dBi rubber duck style swivel 802.11 b/g/n antennas (RP-SMA Male).
GPS	SMA Female jack. Active & Passive antennas supported.

EL-001 - EtherLINQ

4G/LTE Ethernet Router with WiFi, VPN & Firewall



Hardware Specifications

WiFi	
Technology	802.11 b/g/n 300 Mbps max
Operating Mode	Access Point
Security	WPA2-PSK, WPA-PSK, WEP, None

4G/LTE Modem (EtherLINQ Model EL-001 / EC25-AF)	
Module	Quectel EC25-AF FCC ID: XMR201808EC25AF
Frequency Bands (MHz)	LTE: B2: 1900 B4: AWS1700/2100 B5: 850 B12: 700 B13: 700 B14: 700 (AT&T FirstNet) B66: AWS1700/2100 B71: 600 (T-Mobile) WCDMA: B2: 1900 B4: AWS1700/2100 B5: 850
Speeds (max)	LTE Category 4: DL up to 150 Mbps UL up to 50 Mbps
Supported Carriers	North America: Verizon, AT&T, T-Mobile, U.S. Cellular Canada: Bell, Rogers, Telus

Operation of this device outside the parameter ranges given above may cause permanent damage.

EL-001 - EtherLINQ

4G/LTE Ethernet Router with WiFi, VPN & Firewall



Software Specifications

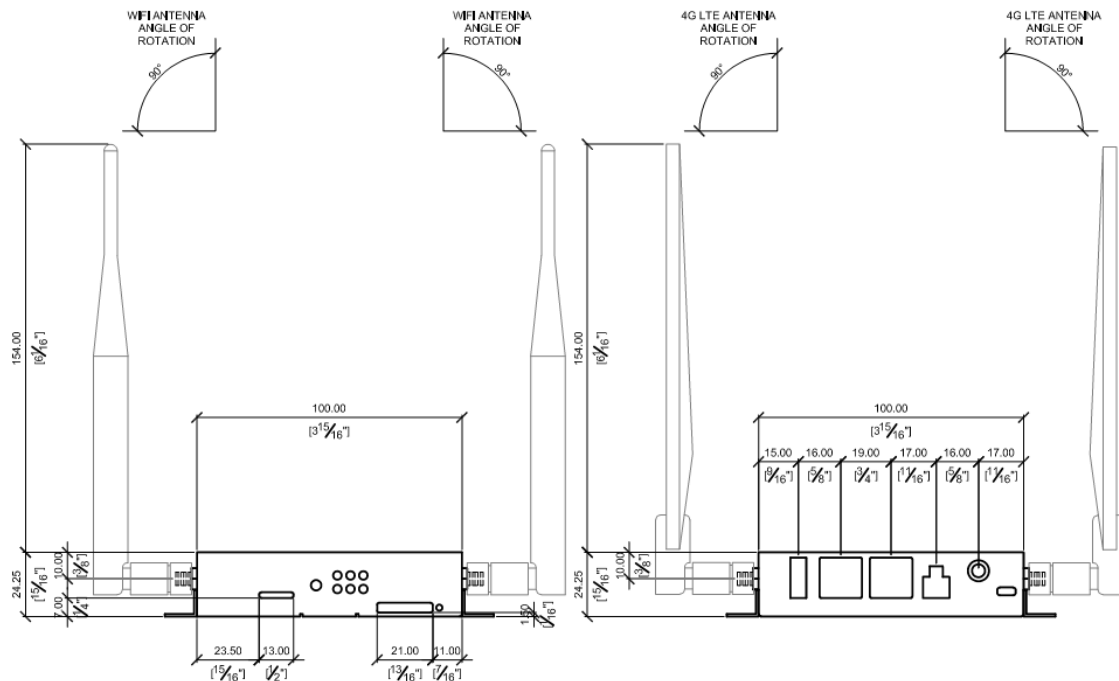
Software Functions	
4G / LTE Features	4G/LTE to WAN Fail-Over and Fall-Back 4G/LTE Keep-Alive Packets Signal Quality History Graph & Statistics 2x MIMO External Antennas Supported
WAN Features	Static & DHCP Address Assignment Assign WAN port to LAN or Disable port WAN to 4G/LTE Fail-Over and Fall-Back WAN Keep-Alive Packets
Networking	LAN DHCP Server WAN Fail-over Detection Limits & Controls Port-Forwarding & Translation IP Pass-Through (Bridge) Mode Virtual Cable Mode (Ethernet over IP) Dynamic DNS (DynDNS, NoIP) Permanent DNS Address (serial#.etherlinq.net)
IPSec VPN Features	IPSec Server and Client Modes Site-to-Site & Remote User Access Tunnels Unlimited Simultaneous IPSec Tunnels IKEv1 & IKEv2 Internet Key Exchange DES / 3DES / AES-128 / AES-192 / AES-256 Encryption MD5 / SHA1 / SHA2-256 / SHA2-384 / SHA2-512 Authentication Diffie-Hellman Groups 1, 2, 5, 14, 15, 16, 17, 18 Dead Peer Detection (DPD)
Virtual Cable Mode	Proprietary end-to-end tunneling through any firewall or network topology. Interoperable with Proxicast's PocketPORT devices in Virtual Cable Mode.
Security Features	Network Address Translation & Firewall HTTPS / SSL Feature Restriction Digitally Signed Firmware
Internal Application Servers	Webcam, Serial Device, GPS
System Management	Web-based Management (Local & Remote) Configuration Backup and Restore Firmware Upgrade and Downgrade via web interface or USB drive Syslog Support Real-Time Logging Scheduled System Restarts Ping, Traceroute Utilities

EL-001 - EtherLINQ

4G/LTE Ethernet Router with WiFi, VPN & Firewall

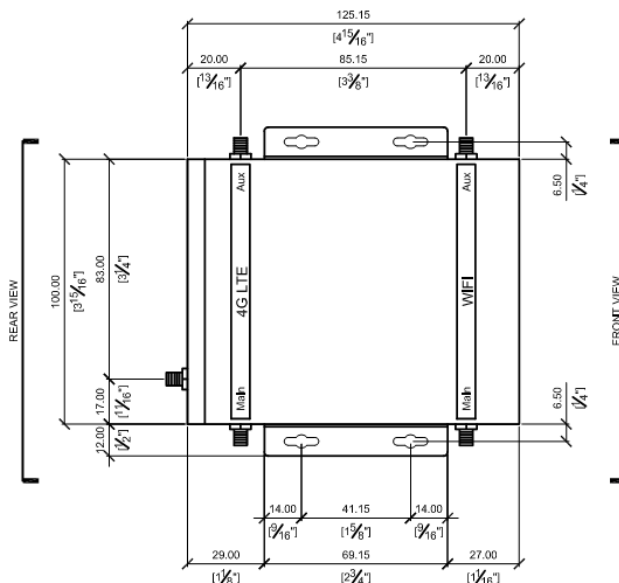


Mechanical Dimensions



FRONT VIEW EtherLINQ 4G LTE Router

REAR VIEW EtherLINQ 4G LTE Router



TOP VIEW EtherLINQ 4G LTE Router

EL-001 - EtherLINQ

4G/LTE Ethernet Router with WiFi, VPN & Firewall



Product Images



EL-001 - EtherLINQ

4G/LTE Ethernet Router with WiFi, VPN & Firewall



Contact Information

For the latest specifications, additional product information, worldwide sales and information about Proxicast:

Web: www.proxicast.com Tel: 1-877-777-7694

Email: sales@proxicast.com 1-412-213-2477

Proxicast • 312 Sunnyfield Drive, Suite 200 • Glenshaw, PA 15116 USA

For technical questions and application information:

Email: support@proxicast.com

Important Notice

The information contained herein is believed to be reliable. Proxicast makes no warranties regarding the information contained herein. Proxicast assumes no responsibility or liability whatsoever for any of the information contained herein. Proxicast assumes no responsibility or liability whatsoever for the use of the information contained herein. The information contained herein is provided "AS IS, WHERE IS" and with all faults, and the entire risk associated with such information is entirely with the user. All information contained herein is subject to change without notice.

The information contained herein or any use of such information does not grant, explicitly or implicitly, to any party any patent rights, licenses, or any other intellectual property rights, whether with regard to such information itself or anything described by such information. Proxicast products are not warranted or authorized for use as critical components in medical, life-saving, or life-sustaining applications, or other applications where a failure would reasonably be expected to cause severe personal injury or death.