

Part 1. Hardware Setup.....



Step 1: Connect MSNswitch power cord to wall outlet.



Step 2: Connect the router power input to MSNswitch.



Step 3: Connect LAN cable from Router. The Internet LED will turn ON to indicate online.



Step 4: Press and hold UIS ON / OFF button (2 seconds) to enable Auto Reset function.

- ❗ 1. Press UIS ON / OFF only when Internet LED is ON.
2. All assigned sites must have responded in order for Auto Reset function to work.

Part 2. Description



LED	ON	OFF	BLINKING
Internet	Online	Offline	≥1 IP has timeout
Cloud Link	Device linked & is connected to server	Device not linked to a Cloud account	Device linked but can't contact server
UIS ON / OFF	Enabled (Auto Reset)	Disabled (Manual Control)	- n/a -

LED (Status)	Description
#1, UIS & #2 (Blinking)	Reset to Factory Default & Clear Cloud Account Link.
All LEDs (Blinking)	Firmware Upgrading. DO NOT interrupt or power off !
#1, UIS & #2 (Blinking in Sequence)	Device is in Add Mode.

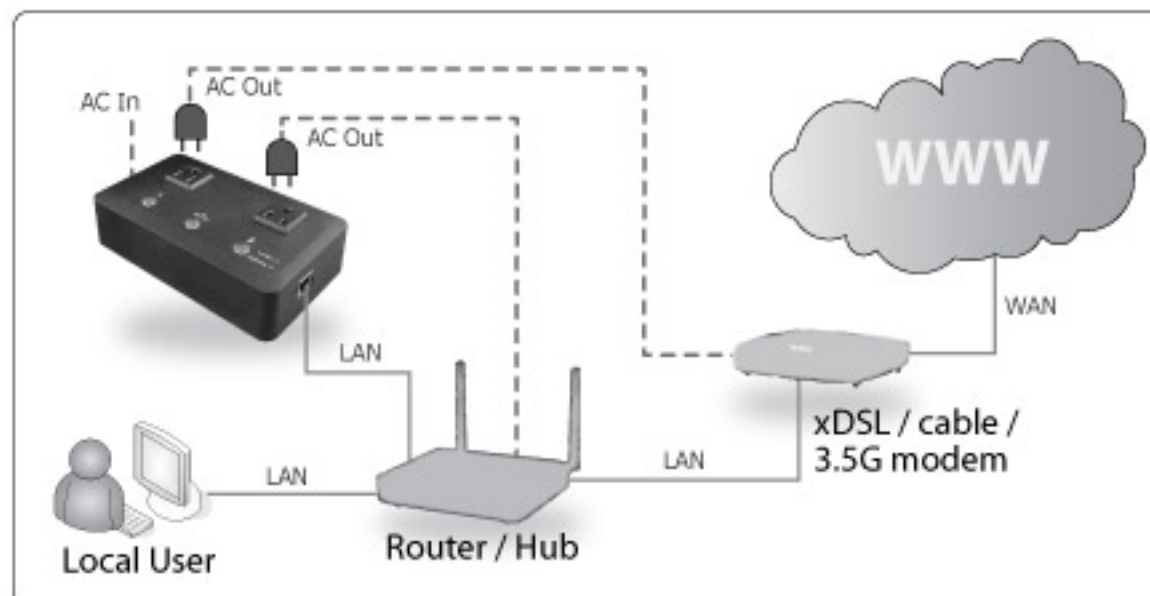
Reset to Factory Default:

Press and hold Outlet #1 & #2 for 10 seconds. Release when all three LED start blinking.

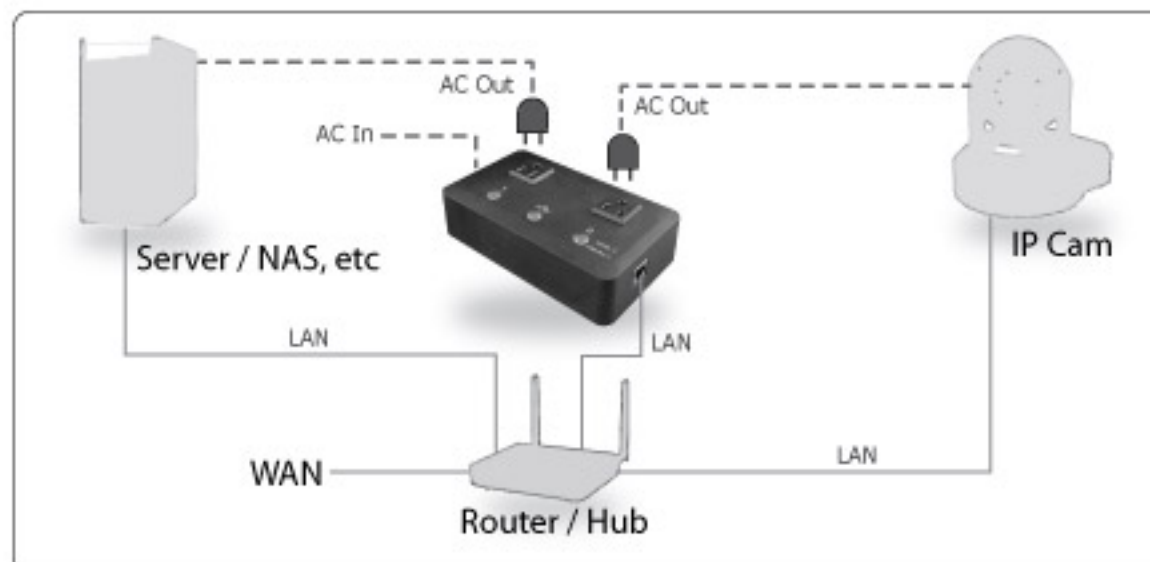
Temporarily Set to a Fixed IP between x.x.x.100 and x.x.x.110: Press and hold [UIS ON / OFF] button 10 seconds.

NOTE: Only when MSNswitch has not been assigned a DHCP IP.

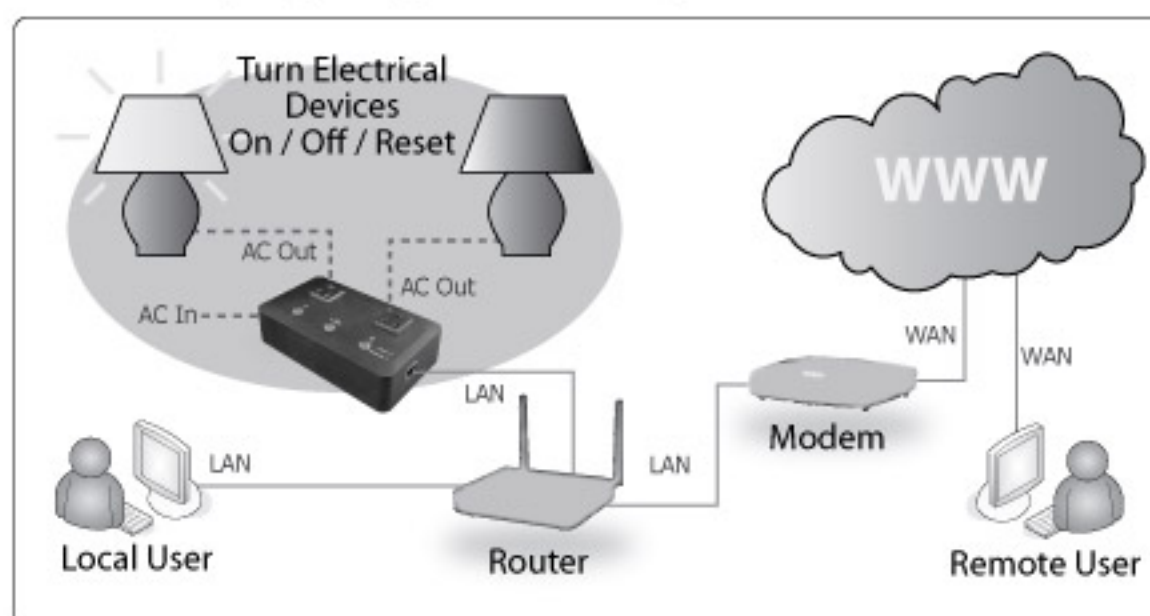
Usage #1: MSNswitch setup to perform automatic reset of router and modem. No software setup required (see hardware setup in Part 1).



Usage #2: MSNswitch setup as watch-dog to keep internet device alive. Software setup required (see Parts 3 & 4).



Usage #3: MSNswitch setup to remote control electrical devices. Software setup required (see Parts 3 & 4).



Part 3: Accessing Web User Interface (GUI)

Access MSNswitch Web User Interface to manage and change settings.

Step 1: Locate device's LAN IP.

Method 1: Check router's DHCP Table.

Method 2: Install & run *Netlity* to scan for IP (see Part 5).

Method 3: Use device default Hostname.

On a Windows system, while in the same LAN as device, open a browser to <http://MNT-XXXXXX> (where X is device's last 6 MAC).

Step 2: Create a new Administrator account.

rev. 2208

For the latest firmware,
please visit <http://www.MSNswitch.com>



available from:
ezDevice APP



For model:
UIS-622b

Guide

Quick Installation

Part 4: How to Access Device from WAN.....

MSNswitch can be remotely controlled thru;

- A: Instant Messaging Tool
- B: ezDevice APP or thru www.Cloud4UIS.com
- C: Built-in Web Interface
- D: API (download from GUI Config > Heartbeat [Help])



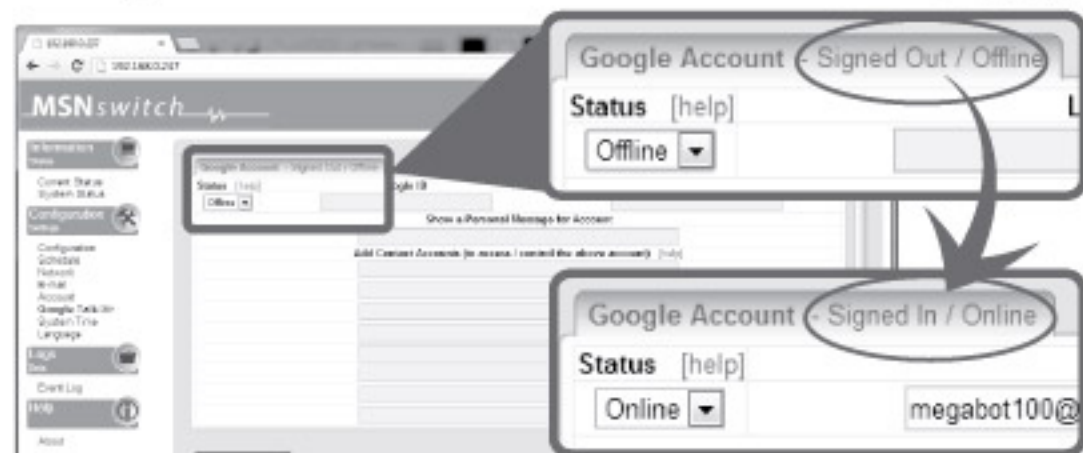
A. Instant Messaging Tool (eg. Google Hangouts / Skype)

Hangouts Setup:

Step 1: Goto www.google.com to create a new Gmail account for MSNswitch.

Step 2: Once registered goto <http://MSNswitch> --> **Configuration** --> **Hangouts**. Select **[Online]** and enter the new Google Login ID and Password.

Next enter your own Gmail in **Add Contact Accounts**. Click **[Apply]**.



Step 3: Once signed in, Google user listed in **Contact Account** will receive a notification to add the device as a friend. Click **[Yes]** to accept.

Skype Setup:

Step 1: Login to <http://MSNswitch> --> **Configuration** --> **Skype**. Select **[Enable]** and follow the "Auto Rebooter" link. Add it to your Skype Contacts.

Step 2: From Skype select "Auto Rebooter" and type "Help"

Step 3: Select **[Get My ID]** to generate a unique ID.

Step 4: Copy and paste ID to <http://MSNswitch> --> **Skype** --> **My ID**. Click **[Add]**.

NOTE:

Skype and Hangout are owned by Microsoft and Google respectively. Use of these application are subject to their usage terms and conditions.

B. Using ezDevice APP or www.Cloud4UIS.com

Step 1: Login to <http://MSNswitch> --> **Network** --> **Cloud Service**. Select **[Enable]**.

Step 2: Install ezDevice APP and Sign Up for a Cloud4UIS account.



Step 3: Add this device to Cloud4UIS account.

- a. From APP, select **[+]** and **model**.
- b. Enter the device **Serial Number** (see product label)

c. Unplug then plug (within 3sec) device's LAN cable to enable **Add Mode** (3x LED will blink in sequence).

d. Done! Device is now listed in **APP** --> **My Device**.



Once 'Added' to Cloud4UIS, the device's **Cloud Link** LED will turn ON.

CLOUD LINK



NOTE:

- a. The first person to 'Add' the device becomes the 'Owner'.
- b. Each device can only have one 'Owner'.
- c. 'Owner' can 'Share' device with other Cloud4UIS users and set these user's access permission.

How to [Remove] 'Added' Device

Method 1: From APP or Cloud4UIS.com account: Select **[Remove Device]**. Note: Device settings retained.

Method 2: From device:

Press & Hold Outlet #1 & #2 for 10 seconds to **Reset device to Factory Default**.

NOTE:

Method 2 clears device Settings, 'Owner' & all 'Shared' users. Corresponding Cloud4UIS unit needs to be removed separately.

C. Built-in Web Interface (setup DDNS and Port Forwarding)

Setup to remotely access MSNswitch Web User Interface.

Step 1: Setup Port Forwarding

- a. Login to your Router web interface.
- b. Forward Port #: 80. Type / Protocol: TCP.

! For details on port forwarding please refer to your router's user manual

Step 2: Get a DDNS account

DDNS service allows a dynamic IP address to be linked to a domain name. See **Configuration** --> **Network** --> **Dynamic DNS** --> **DDNS Providers**.

Select a supported DDNS service or use MSNswitch free domain name. Default as `<serial_number>.icv99.net`

! To change the free domain name, first goto www.iCV99.net to Activate the account. The product Serial Number and Key is at the bottom of the device.

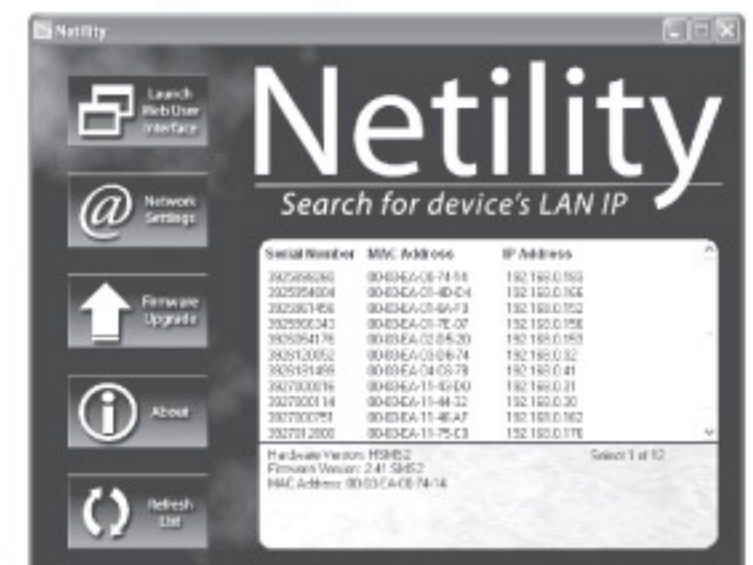
Part 5: Locate MSNswitch using Netility.....

Use Netility to:

- a. launch device web UI,
- b. locate or change network settings, and
- c. upgrade firmware.

Step 1: Download Netility and latest firmware from: www.MSNswitch.com

Step 2: Install and run Netility to list LAN IP and/or upgrade firmware.



NOTE:

- a. Device and Netility must be connected to the same router.
- b. Device's LAN IP can also be obtained from router's DHCP table.

proxicast®

www.proxicast.com
1-877-777-7694