

# ANT-144-001-25

**25 ft SMA Male to SMA Female Coax Cable (400 size)**



## Applications

- 4G/LTE & 5G Antennas
- Cellular Modems, Routers & Amplifiers
- GPS Receivers
- ADS-B Receivers
- HAM Radio Equipment
- NOT for use with TV or WiFi Applications

## Product Features

- SMA Male Connector
- SMA Female Connector
- 50 Ohm Copper-Clad Aluminum Core
- Gold Plated Signal Pins
- PE Outer Jacket - 0.405 inch Diameter
- Heat Shrink Tubing on Connectors
- Low Signal Loss at Common Wireless Frequencies



## Ordering Information

Part No.	Description
ANT-144-001-25	Proxicast 25ft Low-Loss Coax Extension Cable (50 Ohm) - SMA Male to SMA Female (400 Series)

## General Description

Proxicast's ANT-144-001-25 SMA coax cable is the perfect solution for extending 4G/LTE, 5G, GPS, ADS-B or other SMA antennas up to 25 ft from their radio source. Or to extend an existing cable run by 36 ft.

All of Proxicast's coax extension cable assemblies are constructed with top quality extremely low-loss cable and gold plated connectors. Each cable assembly is fully tested.

CFD400 coax is the same diameter as RG8 but has far superior performance characteristics, matching or exceeding LMR400 cable.

The cable's tough polyethylene jacket withstands abrasions and provides excellent moisture resistance. This cable assembly can be used indoors or outdoors.

All outdoor coax connections must be weather-proofed to prevent damage caused by moisture entering the connectors. Use our Pro-Grade Self-Bonding Silicone Tape ([ANT-900-002](#)) for fast & easy connection sealing.

**NOTE:** This cable assembly has standard SMA connectors, not the reverse polarity SMA connectors typically found on WiFi equipment. Standard and reverse SMA connectors will not mate; nor will they mate with the "F" connectors found on most consumer video equipment (TV, cable boxes, etc.).

# ANT-144-001-25

**25 ft SMA Male to SMA Female Coax Cable (400 size)**



## Specifications

Parameter	Rating
Connector 1	SMA Male (Inline Plug)
Connector 2	SMA Female (Inline Jack)
Cable Length	25 ft (7.62 m)
Coax Type	Low-loss CFD400-E <sup>1</sup> (0.405 inch / 10.3 mm diameter) Meets or exceeds specifications of LMR400 <sup>2</sup> Not rated for direct burial or plenum applications
Jacket Material	Polyethylene (PE)
Color	Black
Impedance	50 Ohm
Capacitance	76.0 pF/ft
Velocity of Propagation	85%
Minimum Bend Radius	1.0 inch (25.4 mm)
Operating Temperature	-40°F to +185°F (-40°C to +85°C)

## Signal Attenuation Including Connectors

Frequency (MHz)	Loss (dB)
700	1.0
900	1.1
1700	1.6
1900	1.7
2400	1.9
2700	2.0
5000	2.9
5800	3.1

Operation outside the parameter ranges given above may cause permanent damage.

<sup>1</sup>CFD is a trademark of Raison Enterprise Co. Ltd. (Commate)

<sup>2</sup>LMR is a trademark of Times Microwave Corporation

# ANT-144-001-25

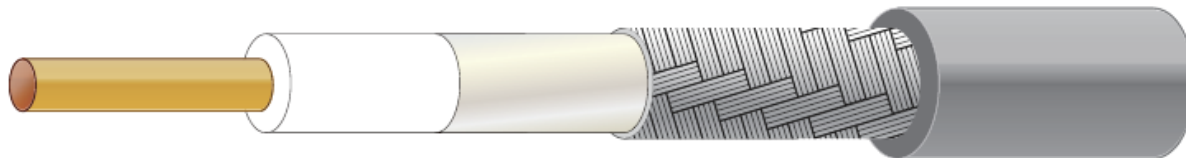
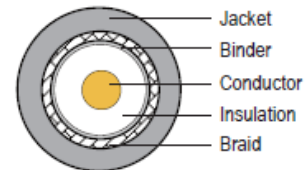
25 ft SMA Male to SMA Female Coax Cable (400 size)



## Mechanical Dimensions

CFD400 Coaxial Cable

### Structure Figure



#### Conductor

Material  
Solid Copper Clad  
Aluminum Wire  
  
Diameter  
Approx. 2.74 mm

#### Insulation

Material  
Foam polyethylene  
  
Diameter  
Approx. 7.24 mm

#### Binder

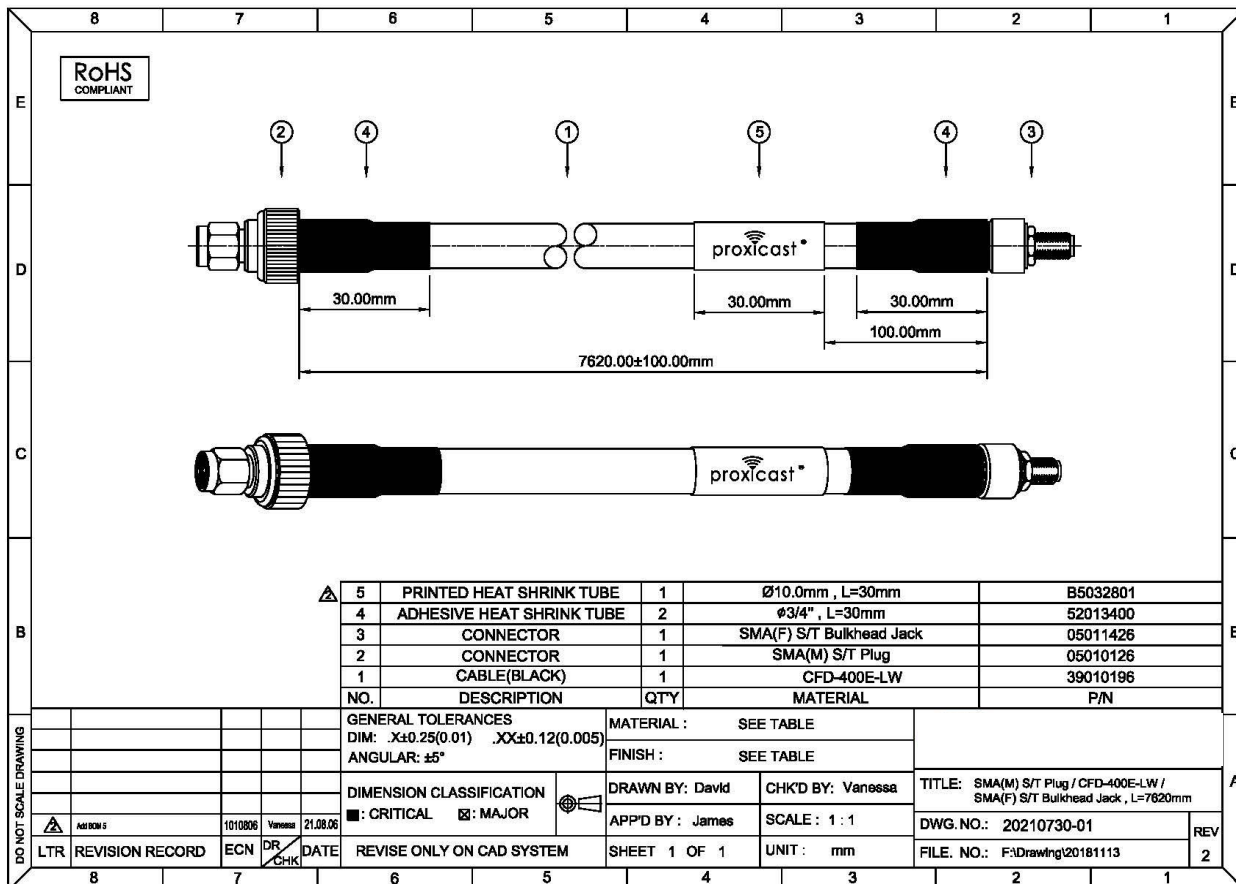
Material  
Aluminum/PE Tape  
  
Diameter  
Approx. 7.35 mm

#### Single Braid

Material  
Tinned copper wire  
  
Coverage  
85%  
  
Diameter  
Approx. 8.1 mm

#### Jacket

Material  
PE / PVC  
  
Color  
Black  
  
Diameter  
Approx. 10.3 mm



# ANT-144-001-25

25 ft SMA Male to SMA Female Coax Cable (400 size)



## Additional Product Images



**SMA Male**



**SMA Female**



Look for the Logo Band  
on Genuine Proxicast  
Cable Assemblies



# ANT-144-001-25

**25 ft SMA Male to SMA Female Coax Cable (400 size)**



## Installation Instructions

- Observe minimum bend radius during installation and handling
- Do not cut or splice
- Minimize the number of connectors and total length of the cable run
- Fully tighten coax connectors to antenna connectors
- Weather seal outdoor coax connections
- Install in-line lightning protection if required by local building, fire, insurance or safety codes
- Not rated for direct burial or plenum applications

## Contact Information

For the latest specifications, additional product information, worldwide sales and information about Proxicast:

Web: [www.proxicast.com](http://www.proxicast.com) Tel: 1-877-777-7694

Email: [sales@proxicast.com](mailto:sales@proxicast.com) 1-412-213-2477

Proxicast • 312 Sunnyfield Drive, Suite 200 • Glenshaw, PA 15116 USA

For technical questions and application information:

Email: [support@proxicast.com](mailto:support@proxicast.com)

## Important Notice

The information contained herein is believed to be reliable. Proxicast makes no warranties regarding the information contained herein. Proxicast assumes no responsibility or liability whatsoever for any of the information contained herein. Proxicast assumes no responsibility or liability whatsoever for the use of the information contained herein. The information contained herein is provided "AS IS, WHERE IS" and with all faults, and the entire risk associated with such information is entirely with the user. All information contained herein is subject to change without notice.

The information contained herein or any use of such information does not grant, explicitly or implicitly, to any party any patent rights, licenses, or any other intellectual property rights, whether with regard to such information itself or anything described by such information. Proxicast products are not warranted or authorized for use as critical components in medical, life-saving, or life-sustaining applications, or other applications where a failure would reasonably be expected to cause severe personal injury or death.