

ANT-128-004

9/11 dBi Fixed Mount Ultra Wide Band LPDA Antenna



Applications

- 4G / LTE / Sub-6 5G Modems & Routers
- 2.4 / 5.8 GHz WiFi / WLAN Access Points
- 900 MHz Point-to-Point Radios
- 4.9 GHz Public Safety Band Equipment
- 3.5 – 3.7 GHz CBRS Systems
- Signal Boosters / Amplifiers
- Wireless Backhaul



Product Features

- 11 dBi Peak Gain
- Compatible with all 4G/LTE & Sub-6 5G Networks
- Compatible with most Cellular Modems/Routers
- Low Return Loss (VSWR)
- 90° x 60° Beamwidth
- Weatherproof, Compact & Light-weight
- N Female Connector on 1 ft Low-Loss Coax
- Includes Pole Mounting Hardware

Ordering Information

Part No.	Description
ANT-128-004	Proxicast 9/11 dBi Ultra WideBand LPDA Antenna (600-6000 MHz)

General Description

Proxicast's ultra wide-band log-periodic dipole array directional antenna is compatible with all 4G/LTE and Sub-6 5G data services from Verizon, AT&T, T-Mobile, US Cellular, Bell Mobility, Rogers, Telus, Sasktel, Telcel, Movistar, Digicel and many other cellular operators. It can also be used with CBRS and 4.9 GHz Public Safety Band radios, 2.4 & 5.8 GHz Wi-Fi access points as well as unlicensed 900 MHz systems.

This small, light-weight, easy-to-install directional antenna improves transmit and receive signals across a wide frequency spectrum range and is ideal for many outdoor applications, including building rooftops, utility poles, surveillance trailers, well sites, remote telemetry units, meters, homes and offices.

With the appropriate adapter cable (not included), this antenna is compatible with USB cellular modems and Mi-Fi Hotspots, external 4G/5G cellular modems and routers from companies such as CalAmp, Cisco, Cradlepoint, Digi, MoFi, Pepwave, Proxicast, and Sierra Wireless. It is also compatible with most signal booster/amplifiers.

For MIMO applications mount 2 identical LPDA antennas at a 90 degree angle to each other.

All outdoor coax connections should be weather-proofed to minimize damage caused by moisture in the connectors or cabling. Use our Self-Bonding silicone tape (ANT-900-002) for fast and easy connection sealing.

ANT-128-004

9/11 dBi Fixed Mount Ultra Wide Band LPDA Antenna



Electrical Specifications

Parameter	Rating
Frequency Range	600-6000 MHz Includes all 4G/LTE & Sub-6 GHz frequencies used in N. America/Europe 900 MHz unlicensed ISM Band 2.4 & 5.8 GHz Wi-Fi Bands 3.5 – 3.7 GHz CBRS Bands 4.9 GHz licensed Public Safety Band
Peak Gain	9 / 11 dBi
VSWR	≤1.8:1
Vertical Beamwidth	60°
Horizontal Beamwidth	90°
Input Impedance	50 Ohm
Polarization	Vertical
Max Input Power	50 W
DC Grounded	Yes

Mechanical Specifications

Parameter	Rating
Connector Type	N Female (jack)
Cable Length	1 ft (300 mm) of LMR 195 low-loss coax
Mounting	Pole or Wall (2.0 in dia. U-bolts & bracket included)
Dimensions	17.3 x 8.2 x 2.8 in (440 x 209 x 70 mm) excluding 3.5 x 2.75 in (90 x 70 mm) bracket
Materials RoHS Compliant	Radome: UV stabilized ABS plastic Connector: Brass with Nickel plating Mounting Bracket: Aluminum U-Bolts: Galvanized Steel
Antenna Color	Ivory
Weight	18 oz (510 g) excluding mounting hardware
Operating Temperature	-40°C to +70°C
Max Wind Load	134 MPH (217 KIPH)

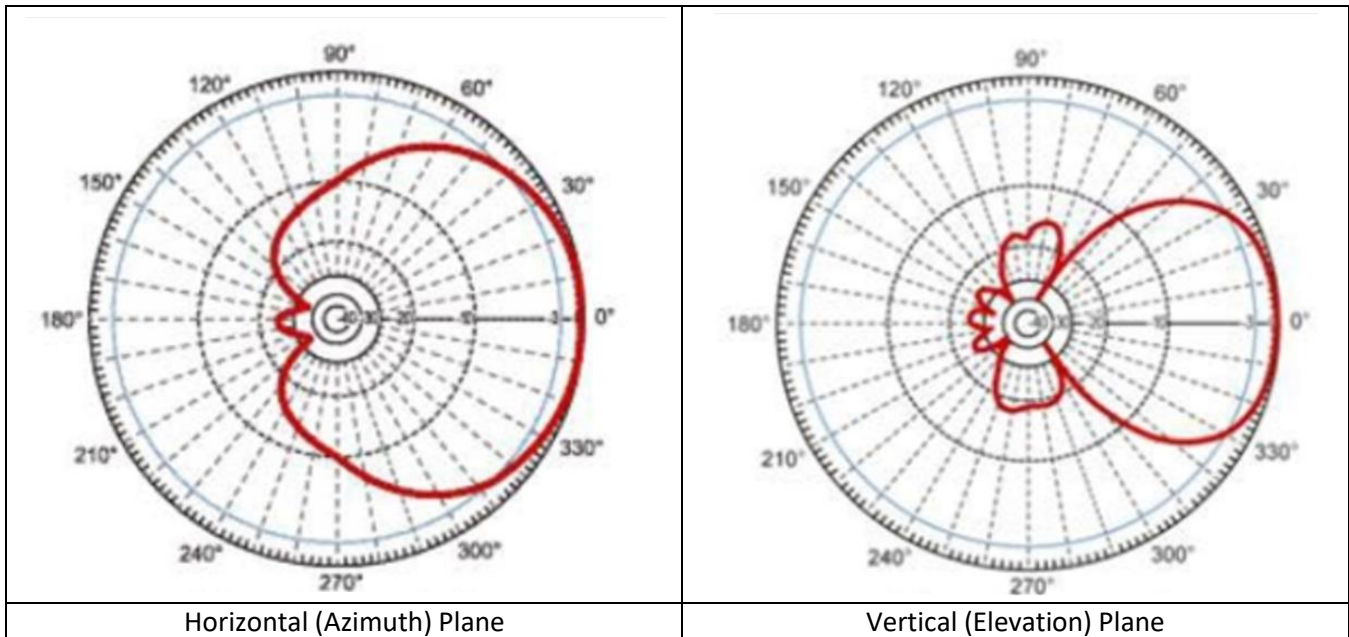
Operation of this device outside the parameter ranges given above may cause permanent damage.

ANT-128-004

9/11 dBi Fixed Mount Ultra Wide Band LPDA Antenna



Radiation Patterns



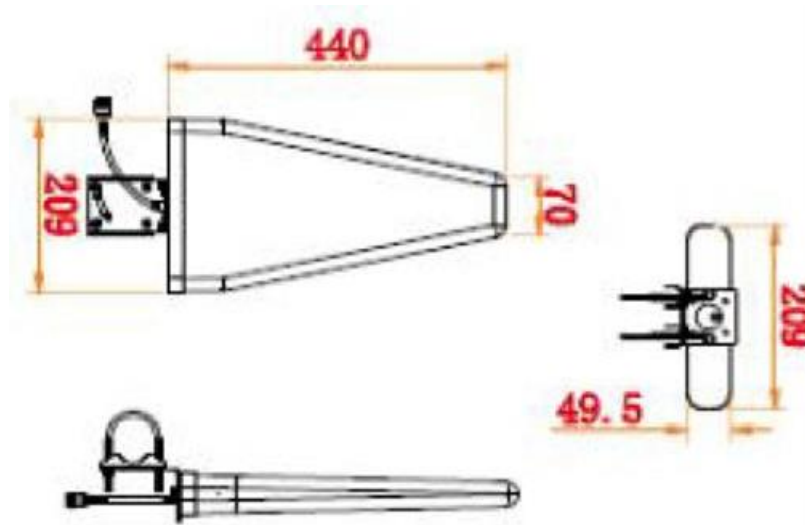
ANT-128-004

9/11 dBi Fixed Mount Ultra Wide Band LPDA Antenna

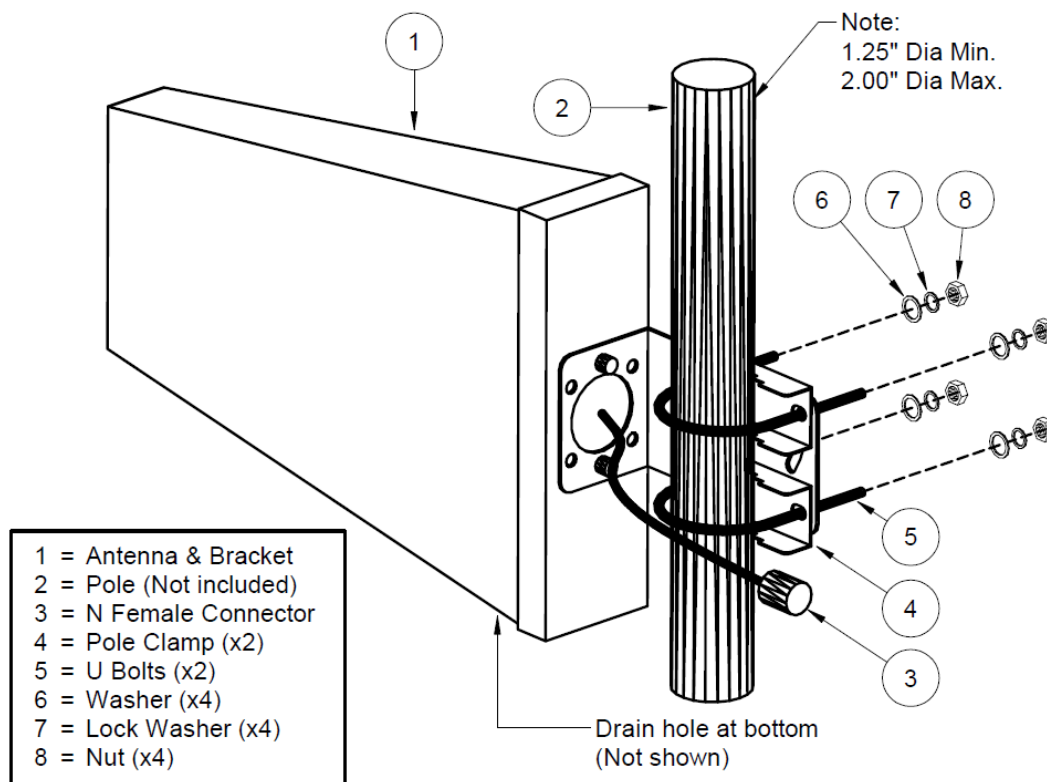


Mechanical Dimensions

Dimensions in millimeters



Assembly Instructions



Installation Instructions

- Determine location of nearest cell tower for your carrier (see opensignal.org or cellreception.com)
- Orient antenna so drain holes point downward
- Mount antenna to 2.0 inch max diameter mast or to wall as high as possible
- Point antenna toward cell tower & away from:
 - other antennas
 - trees & buildings
 - large vertical metal or concrete objects
- Adjust antenna position left/right and up/down tilt to find optimal signal
- Keep coax lead cable as short as possible
- Weatherproof all outdoor coax connectors
- Observe local safety codes regarding lightning protection, grounding, and mast height

Contact Information

For the latest specifications, additional product information, worldwide sales and information about Proxicast:

Web: www.proxicast.com Tel: 1-877-777-7694

Email: sales@proxicast.com 1-412-213-2477

Proxicast • 312 Sunnyfield Drive, Suite 200 • Glenshaw, PA 15116 USA

For technical questions and application information:

Email: support@proxicast.com

Important Notice

The information contained herein is believed to be reliable. Proxicast makes no warranties regarding the information contained herein. Proxicast assumes no responsibility or liability whatsoever for any of the information contained herein. Proxicast assumes no responsibility or liability whatsoever for the use of the information contained herein. The information contained herein is provided "AS IS, WHERE IS" and with all faults, and the entire risk associated with such information is entirely with the user. All information contained herein is subject to change without notice.

The information contained herein or any use of such information does not grant, explicitly or implicitly, to any party any patent rights, licenses, or any other intellectual property rights, whether with regard to such information itself or anything described by such information. Proxicast products are not warranted or authorized for use as critical components in medical, life-saving, or life-sustaining applications, or other applications where a failure would reasonably be expected to cause severe personal injury or death.