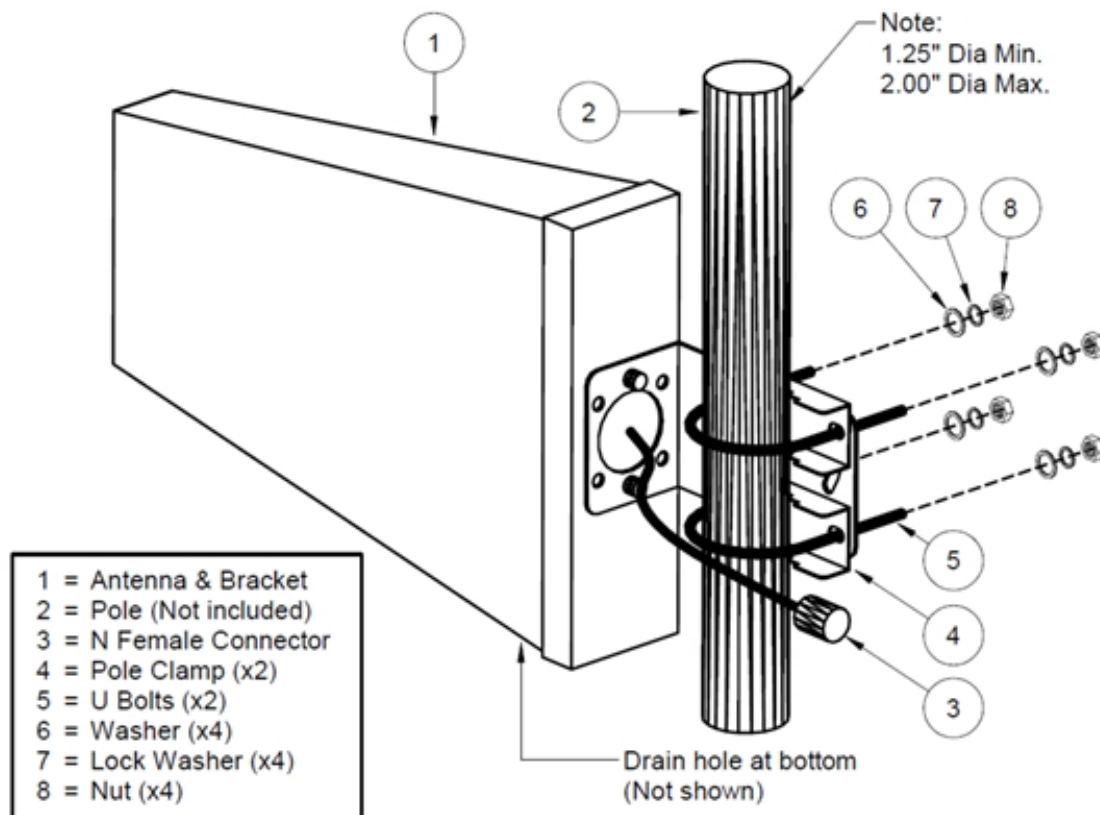




ANT-128-004 – 9/11 dBi LPDA ANTENNA ASSEMBLY INSTRUCTIONS



LPDA Antenna Installation Tips

- Determine location of nearest cell tower for your carrier (see opensignal.org or cellreception.com)
- Orient antenna so drain holes point downward
- Mount antenna to 2.0 inch max diameter mast or to wall as high as possible
- Point antenna toward cell tower
- Point away from:
 - other antennas
 - trees & buildings
 - large vertical metal or concrete objects
- Adjust antenna position left/right and up/down tilt to find optimal signal
- Keep coax lead cable as short as possible
- Weatherproof all outdoor coax connectors
- Observe local safety codes regarding lightning protection, grounding, and mast height